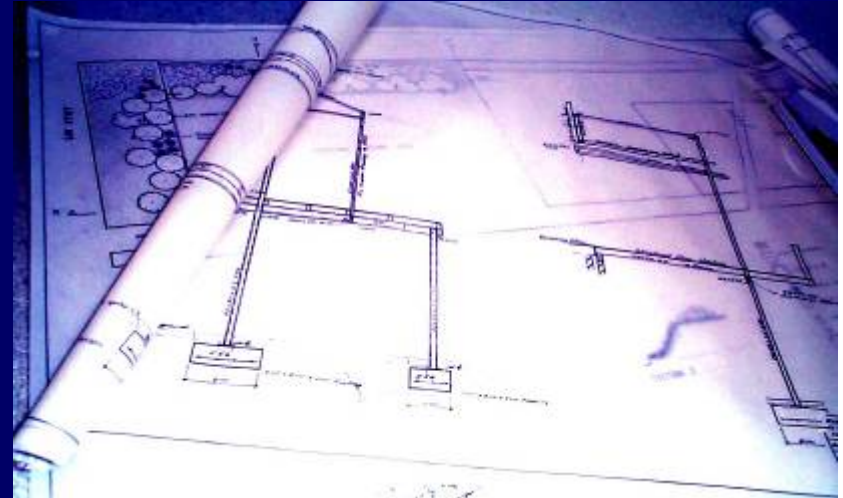




The **ELECTRONIC BLUEPRINT** is a series of building industry design and training publications, including an editable electronic manual for the design and specification of residential construction, provided free-of-charge to architects, consulting engineers and builders. They are encouraged to copy the drawings and specifications into their own contract documents, thus affording building product suppliers a unique opportunity to showcase their products.

## Partner Housing Australasia



**ELECTRONIC BLUEPRINT Distance Learning Package**

**Affordable Housing: Asia-Pacific Region**

**Site Safety**

## About the Training Package

This training package is part of the Electronic Blueprint Distance Learning program. It enables participants to acquire on-going training and professional knowledge of the building industry by distance learning techniques.

## To Navigate the Training Package

To navigate, use the “arrow down” and “arrow up” keys to move forward or back through the presentation.

## More Help

To contact your tutor click on the address below, write the email and send. Your tutor will respond within 48 hours. [info@electronicblueprint.com.au](mailto:info@electronicblueprint.com.au)

## Assignment

On completion of the presentation, you may complete an assignment and email it to the tutor at the address below. The purpose of the assignment is to provide focus for the presentation, and to enable you to apply the information to practical situations. The tutor will assess it, provide comments and forward a certificate by return email. [info@electronicblueprint.com.au](mailto:info@electronicblueprint.com.au)

## Important Note

If you wish to take advantage of the interactive facilities of this training module, you must now connect to the Internet and click here [www.electronicblueprint.com.au](http://www.electronicblueprint.com.au)

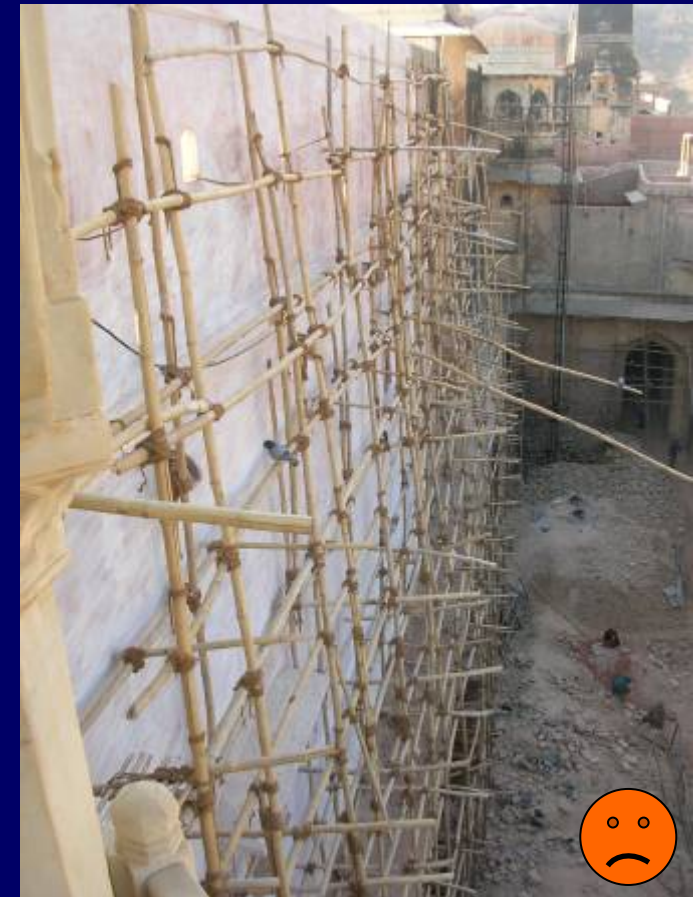
## Safety of Scaffolds

On many sites, scaffolds and ladders are inadequate, and represent a severe risk to the workers. However, a properly constructed frame scaffold is a safe means of providing access, even for the largest of construction projects.



## Safety of Scaffolds

**A properly constructed steel modular scaffold is preferable to a poorly constructed timber or bamboo scaffold.**



## Safety of Handrails

Where it is possible for workers to fall and be injured, adequate hand rails and safety barriers must be supplied.

Lack of handrails and safety barriers



## Safety of Electrical Equipment

All electrical equipment must be:

- In good working order
- Checked and certified by an experienced and authorised authority
- Adequately earthed
- Operated safely in dry conditions (not in the rain or in water).

**Welders standing in water**

