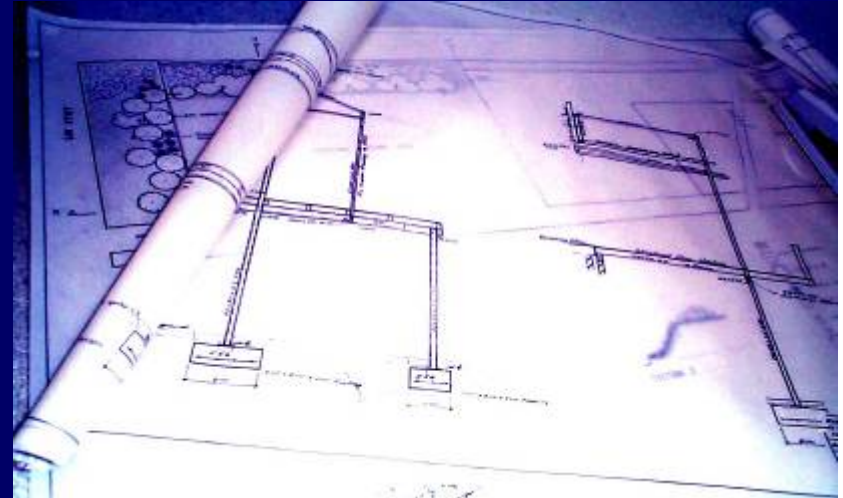




The **ELECTRONIC BLUEPRINT** is a series of building industry design and training publications, including an editable electronic manual for the design and specification of residential construction, provided free-of-charge to architects, consulting engineers and builders. They are encouraged to copy the drawings and specifications into their own contract documents, thus affording building product suppliers a unique opportunity to showcase their products.

Partner Housing Australasia



ELECTRONIC BLUEPRINT Distance Learning Package

Affordable Housing: Asia-Pacific Region

Plumbing & Drainage

About the Training Package

This training package is part of the Electronic Blueprint Distance Learning program. It enables participants to acquire on-going training and professional knowledge of the building industry by distance learning techniques.

To Navigate the Training Package

To navigate, use the “arrow down” and “arrow up” keys to move forward or back through the presentation.

More Help

To contact your tutor click on the address below, write the email and send. Your tutor will respond within 48 hours. info@electronicblueprint.com.au

Assignment

On completion of the presentation, you may complete an assignment and email it to the tutor at the address below. The purpose of the assignment is to provide focus for the presentation, and to enable you to apply the information to practical situations. The tutor will assess it, provide comments and forward a certificate by return email. info@electronicblueprint.com.au

Important Note

If you wish to take advantage of the interactive facilities of this training module, you must now connect to the Internet and click here www.electronicblueprint.com.au



ELECTRONIC
BLUEPRINT

Partner Housing Australasia

Septic Waste Disposal

Septic Waste Disposal

It is important to avoid over-dosing of septic systems. Septic tank systems for low income housing should comply with the following.

- **Design for not less than five people per household**
- **Sewage loading of:**
70 litres/head/day (with water reticulated to a cistern flush)
60 litres/head/day (with manually administered “dipper”)
- **Sludge retention period 3 years**
- **Effluent retention period 24 hours**
- **Sludge loading 0.18 litres/person**
- **Effluent disposal by either:**
Soak-away designed to account for insitu percolation rate
(time in minutes for water to drop 25 mm:

Percolation Rate mins/25 mm	Application rate l/m² of drain sides
3	108
10	80
20	53
30	33

Surface evaporation at a dosing rate not exceeding 25 litres/m²/day.

