

# Rynat Industries “Endura” Partitioning System Designed for Schools & Local Government Projects

When the best is just not good enough...we introduce to you the ‘Endura’ Range of Toilet and Shower Partitioning. Able to withstand the heavy abuse often associated with Public and School Environments.



What makes the difference?

The type of hardware used.

## **Spectrum and Trimline**

Series Partitions use Designer “screw fix” hardware.

**Endura** Series Partitions use “bolt through fix” hardware.

The Door Stop, Latch and Hinges are bolted through the board, secured with tamper proof fixings.

Advantages are that the hardware is not easily tampered with therefore, offering maximum resistance to vandalism.



**Rynat**  
INDUSTRIES

www.rynat.com

Tel (08) 9472 7288  
Fax (08) 9472 7299  
Email info@rynat.com

# RYNAT 'ENDURA'

**ABLE TO  
WITHSTAND THE  
TOUGHEST OF  
SITUATIONS**

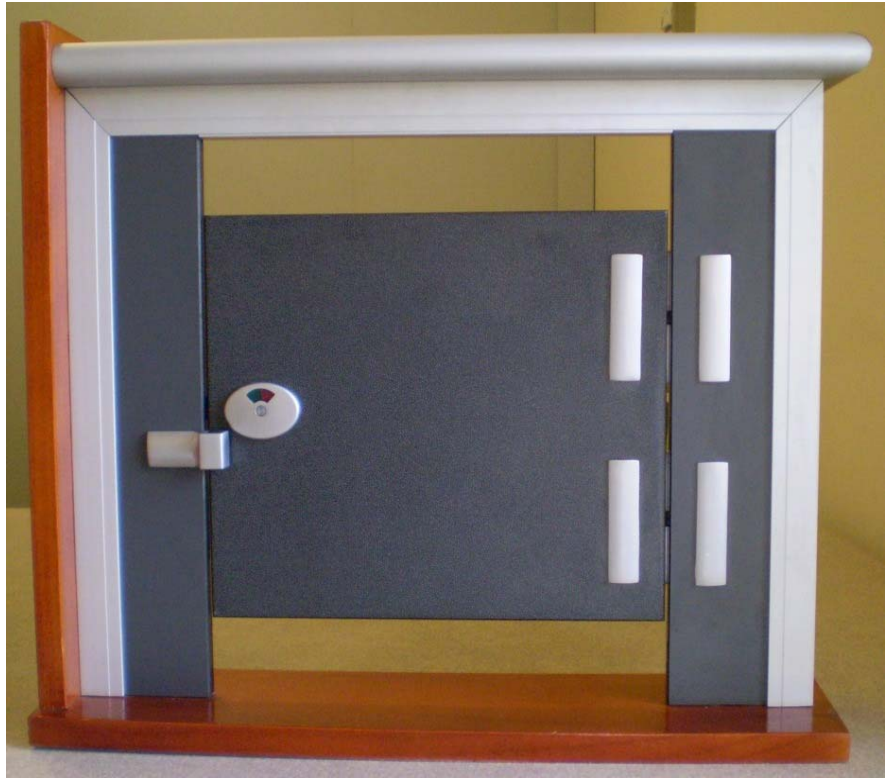
Resistance to Graffiti.

Resistance to Impact

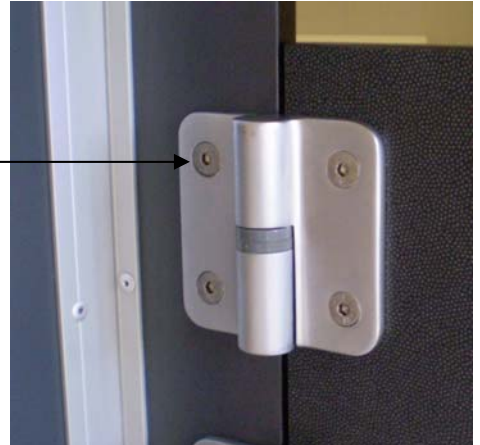
Resistance to Cigarette  
Burns

Suitable for both Toilet and  
Shower Applications

Can be hosed down for  
ease of cleaning



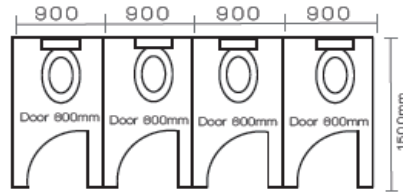
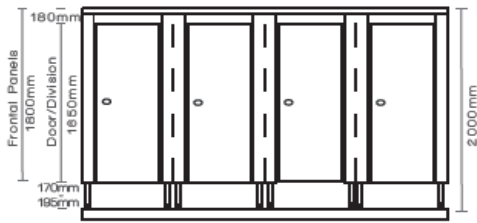
**All hardware is bolt through with  
tamper resistant fixings.**



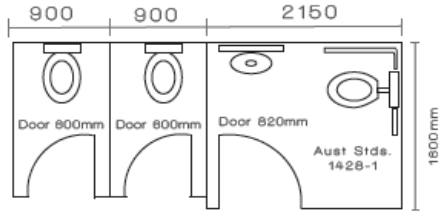
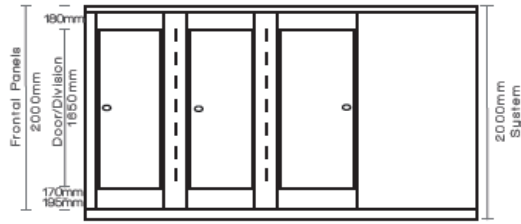
**Extra Heavy Duty Headrail for Maximum  
Strength.**



## Toilet Cubicle Pedestal Mounted



## Toilet Cubicle Floor Mounted



## 13mm Solid Compact Laminate Colours Available

### Solids\*



B070 Mega White      E021 Ecu      F026 Felt      P001 Moonstone      G028 Flannel Grey

### Patterns\*



B092 Brushed Grey      C011 Caviar      V025 Vega Felt      V061 Vega Moonstone      V026 Vega Flannel Grey

### Woodgrains\*



B103 Tropical Cherry      B100 Light Fig      N026 French Walnut      B101 Dark Fig

\* Note Division Panel Colour Selection: If cubicle depth is 1550mm or less choice of full colour selection is available. If cubicle depth exceeds 1550mm, full colour selection is available for frontal panels, nibs and doors only, divisional panel colours must be chosen from the "Solid" compact laminate range of colours.