



# Rynat Multipurpose Partitioning Systems



# Rynat Multipurpose Partitioning Systems

Rynat Industries are a leading Western Australian company specialising in the supply of commercial stainless steel washroom accessories, toilet and shower cubicles. This innovative team provides layouts, specifications and product choices from design through to construction, ensuring each stage exceeds Australian Standards. With over 20 years experience, a focus on quality and the widest range of interior styling to meet any budget - clients are guaranteed only the best in products and services to last the life of their building.

## SPECIFY GREEN

Minimise the Environmental Impact  
Maximise your Green Star Rating



green building council australia  
MEMBER

Rynat Partitioning Systems are engineered to provide maximum strength and durability which lowers maintenance or replacement costs offering long product life span and low panel emissions for better indoor air quality hence substantially contributing towards your Green Star Credit Rating Points.

Rynat Industries are committed to promoting and facilitating environmentally sustainable manufacturing and construction practices and use only environmentally preferable manufacturers of raw material products who uphold environmentally responsible forest management programs.

(See Green Star - Office Design v2 Ref No. Mat-8)



## SPECIFICATION

Constructed of 13mm Solid Compact Laminate panels and doors.

All Aluminium components wall channel, headrail, snap in door inserts, corner posts are all natural anodised clear finish.

Stylish award winning door furniture complete with concealed fixings and unique integrated covers.

Safety lift-off spring hinges. Three per door with concealed fixings.

Frontal Panel options

- Epoxy dowelled to the floor
- Supported on an adjustable foot assembly

System Height: 2000mm

Overall Depth: 1500mm - 1800mm

Standard Width: 900mm

# Spectrum

Signature design

Stylish sleek headrail

Gapless system  
for maximum privacy

Pedestal mounted  
for ease of cleaning



**Options available**

Floor mounted frontal panels in lieu of adjustable foot assembly

## RECOMMENDED APPLICATIONS

- Prestige Projects
- Office Buildings
- Hotels
- Restaurants
- Hospitals

# Trimline

Contemporary styling,  
clean lines

Solidly braced

Extra heavy duty headrail

Floor mounted for  
maximum strength



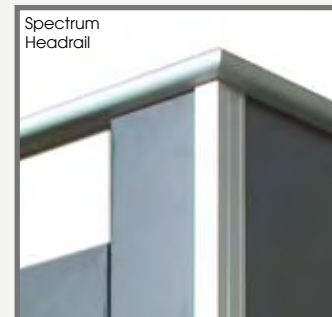
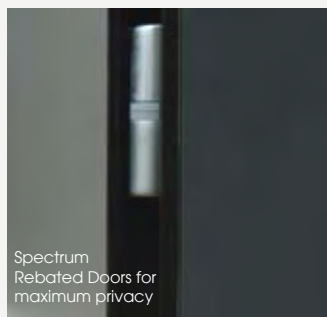
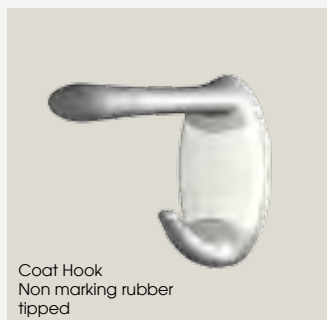
**Options available**

Adjustable foot assembly in lieu of floor mounted frontal panels

## RECOMMENDED APPLICATIONS

- Educational / Schools
- Institutional Centres
- Caravan Parks
- Recreation & Health Centres
- Aquatic Centres
- Nightclubs
- Sports and Entertainment Venues
- Shopping Centres / Cinemas

# Rynat Multipurpose Partitioning Systems



## Hardware Components

Sleek coordinated modern styling, colour matched all with concealed fixings with unique integrated covers.

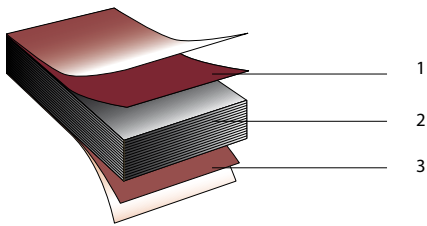
Latchsets are smooth action, easy to use emergency snib with integrated door bumper.

## Features

- Able to withstand the effects of vandalism and high abuse often associated with public washrooms
- Robust construction engineered to provide maximum strength and durability lowering maintenance and replacement costs
- Suitable for both toilet and shower partitioning
- Can be hosed down for ease of cleaning
- Moisture resistant
- Easy to install
- Environmentally Green
- Australian Designed and Manufactured

# compact laminate

The best decorative solution for demanding environments



- Hygienic and rot-proof material.
- Chemically inert, allowing contact with food stuffs.
- Black core requiring no edging.

- Polyrey Compact Laminate is a solid grade laminate 12.5mm thick in FA finish which is made up of two decorative faces (1 & 3), with a solid black kraft core (2). Conforms to standard EN 438.
- Polyrey Compact Laminate's inbuilt strength and durability reduces maintenance costs, offering long product lifespans.
- Polyrey Compact Laminate is environmentally friendly with low panel emissions, improving indoor air quality.
- Polyrey leads an active policy to reduce the impact of its activity on the environment throughout all stages of the manufacturing process and life cycle of its products.

## Unique Properties

- the dimensional stability of a self-supporting board
- the density of a material which does not delaminate when machined
- the finish of a ready to use board, which does not require bonding to a core board
- save time in preparation and installation
- the durability of a high-wearing surface:
  - resistance to impact, vandalism and dirt
  - resistance to humidity and frequent cleaning
  - resistance to chemicals
- the possibility for machining throughout the thickness of the product.



## Solids\*



B070 Mega White

E021 Ecu

F026 Felt

P001 Moonstone

G028 Flannel Grey

## Patterns\*



B092 Brushed Grey

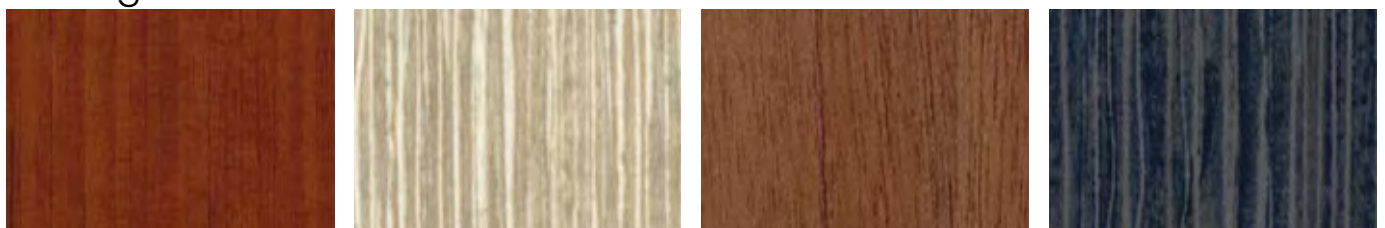
C011 Caviar

V025 Vega Felt

V061 Vega Moonstone

V026 Vega Flannel Grey

## Woodgrains\*



B103 Tropical Cherry

B100 Light Fig

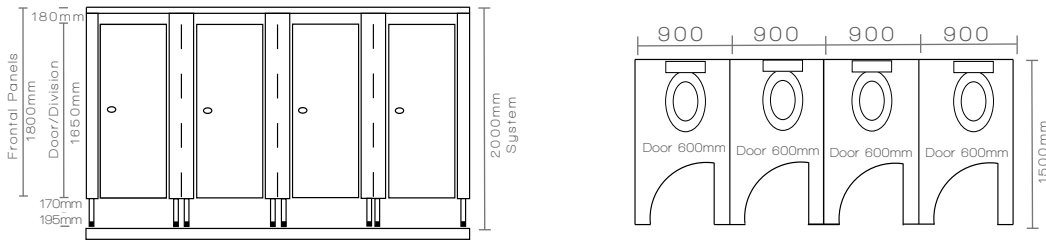
N026 French Walnut

B101 Dark Fig

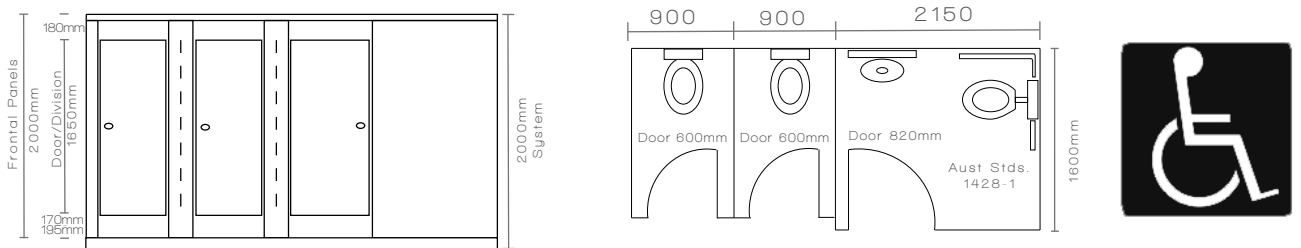
\* Note Division Panel Colour Selection: If cubicle depth is 1550mm or less choice of full colour selection is available. If cubicle depth exceeds 1550mm, full colour selection is available for frontal panels, nibs and doors only, divisional panel colours must be chosen from the "Solid" compact laminate range of colours.

# Rynat Multipurpose Partitioning Systems

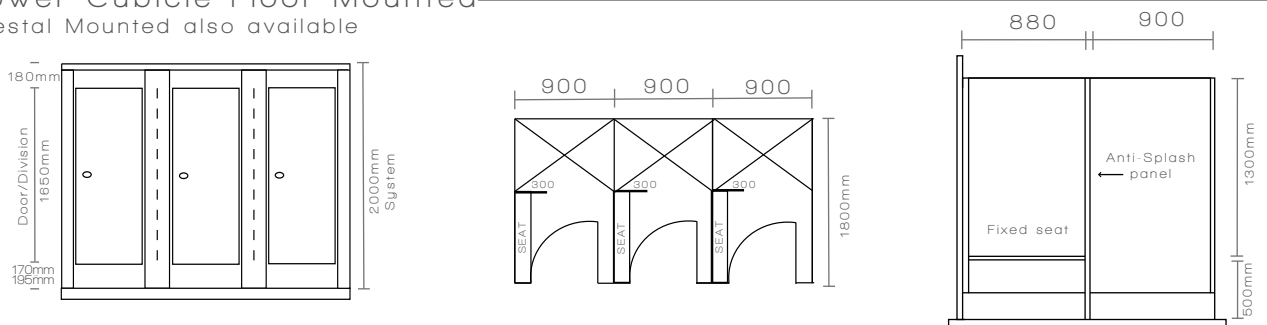
## Toilet Cubicle Pedestal Mounted



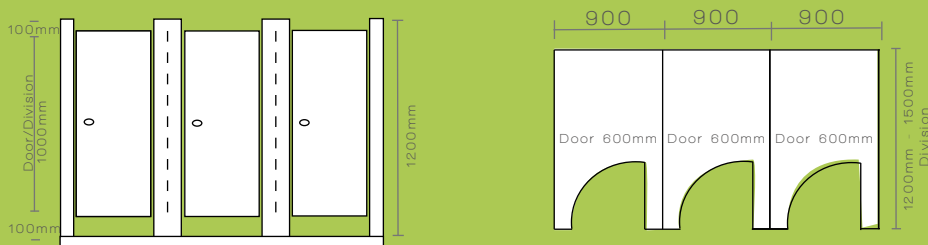
## Toilet Cubicle Floor Mounted



## Shower Cubicle Floor Mounted Pedestal Mounted also available



junior cubicles available



**APPLICATIONS** Child care centres, Kindergartens, Parenting centres

### Rynat Partitioning Systems are installer friendly

A full set of installation instructions including layout plans are provided. All panels are pre-drilled for ease of installation. Tool kit and all necessary fixings included with each partitioning system supplied.

**Full Specification and Detailed Drawings available at [www.rynat.com](http://www.rynat.com).**

# Rynat Washroom Accessories



**2112**  
Horizontal Surface  
Mounted Soap Dispenser



**822**  
Basin/Vanity Mounted  
Soap Dispenser 1 Litre



**279**  
Surface Mounted  
Waste Receptacle  
24 Litre



**262**  
Lockable Surface Mounted  
Paper Towel Dispenser



**2890**  
Jumbo Lockable  
Toilet Roll Holder



**2730**  
Heavy-duty Cast  
Aluminium Satin Finish  
Toilet Roll Holder



**7686**  
Double Toilet Roll Holder  
OPTION: Theft resistant  
spindle 7686.60



**7685**  
Single Toilet Roll Holder  
OPTION: Theft resistant  
spindle 7685.60



**KB101-00**  
Vertical  
Baby  
Change



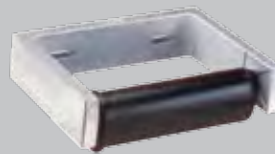
**KB100-00**  
Horizontal  
Baby  
Change



## Accessories to suit Australian Standards AS1428.1



**2888**  
Toilet Roll Holder  
Double



**273**  
Toilet Roll Holder  
Controlled Delivery

**3699**  
Combination  
Paper Towel /  
Waste  
360mm W x 720 H x  
110 D



**812472**  
Tilt Mirror  
Stainless  
Steel Frame  
406mm W x  
960mm H



**817190**  
Folding Shower Seat  
355mm D x 960mm W



**2111**  
Soap Dispenser  
Surface Mounted

### Safety Grab Rails



**5806.90.R SET**  
Specify either  
left hand or  
right hand.

Seven Year Limited Warranty Conditional - 7 Years from installation date pertaining to Toilet and Shower Cubicles against breakage, corrosion, delamination and defects in factory workmanship when properly installed, used and serviced in the normal fashion. This warranty is limited to repair or exchange of defective components and does not cover any damage resulting from breakage or otherwise caused by vandalism.

Illustrations and descriptions herein are applicable to production as of the date of this catalogue. The manufacturer reserves the right and does from time to time, make changes and improvements in designs and dimensions.



**Rynat**  
INDUSTRIES

25 Adrian Street  
Welshpool, 6106  
Western Australia

Tel (08) 9472 7288  
Fax (08) 9472 7299  
Email info@rynat.com

International Tel: 61 8 9472 7288  
International Fax: 61 8 9472 7299

[www.rynat.com](http://www.rynat.com)

Printed May 2007

